

Immunogenetic Profiles and Associations of Breast, Cervical, Ovarian, and Uterine Cancers

Lisa M James^{1,2,3} and Apostolos P Georgopoulos^{1,2,3,4}

¹Department of Veterans Affairs Health Care System, The HLA Research Group, Brain Sciences Center, Minneapolis, MN, USA. ²Department of Neuroscience, University of Minnesota Medical School, Minneapolis, MN, USA. ³Department of Psychiatry, University of Minnesota Medical School, Minneapolis, MN, USA. ⁴Department of Neurology, University of Minnesota Medical School, Minneapolis, MN, USA.

Cancer Informatics
Volume 22: 1–13
© The Author(s) 2023
Article reuse guidelines:
sagepub.com/journals-permissions
DOI: 10.1177/11769351221148588



ABSTRACT: It is increasingly recognized that the human immune response influences cancer risk, progression, and survival; consequently, there is growing interest in the role of human leukocyte antigen (HLA), genes that play a critical role in initiating the immune response, on cancer. Recent evidence documented clustering of cancers based on immunogenetic profiles such that breast and ovarian cancers clustered together as did uterine and cervical cancers. Here we extend that line of research to evaluate the HLA profile of those 4 cancers and their associations. Specifically, we evaluated the associations between the frequencies of 127 HLA alleles and the population prevalences of breast, ovarian, cervical, and uterine cancer in 14 countries in Continental Western Europe. Factor analysis and hierarchical clustering were used to evaluate groupings of cancers based on their immunogenetic profiles. The results documented highly similar immunogenetic profiles for breast and ovarian cancers that were characterized predominantly by protective HLA effects. In addition, highly similar immunogenetic profiles for cervical and uterine cancers were observed that were, conversely, characterized by susceptibility effects. In light of the role of HLA in host immune system protection against non-self antigens, these findings suggest that certain cancers may be associated with similar contributory factors such as viral oncoproteins or neoantigens.

KEYWORDS: Breast cancer, ovarian cancer, cervical cancer, uterine cancer, human leukocyte antigen, immunity, genetics

RECEIVED: October 31, 2022. **ACCEPTED:** December 13, 2022.

TYPE: Original Research

FUNDING: The author(s) disclosed receipt of the following financial support for the research, authorship, and/or publication of this article: Partial funding for this study was provided by the University of Minnesota (the Anita Kunin Chair in Women's Healthy Brain Aging, the Brain and Genomics Fund, the McKnight Presidential Chair of Cognitive Neuroscience, and the American Legion Brain Sciences Chair) and the U.S. Department of Veterans Affairs. The sponsors had no role in the current study design, analysis or

interpretation, or in the writing of this paper. The contents do not represent the views of the U.S. Department of Veterans Affairs or the United States Government.

DECLARATION OF CONFLICTING INTERESTS: The author(s) declared no potential conflicts of interest with respect to the research, authorship, and/or publication of this article.

CORRESPONDING AUTHOR: Apostolos P Georgopoulos, Department of Neuroscience, University of Minnesota Medical School, Brain Sciences Center (11B), Minneapolis VAHCS, One Veterans Drive, Minneapolis, MN 55417, USA. Email: omega@umn.edu

Introduction

Cancer is a leading cause of death among women worldwide resulting from both modifiable and genetic factors.^{1–3} Regarding genetic factors, the influence of human leukocyte antigen (HLA) on cancer risk, progression, and therapeutic response is increasingly recognized for several cancer types,^{4–9} including women's cancers such as breast, ovarian, uterine, and cervical cancers^{9–21} Furthermore, HLA has been implicated in shared heritability across cancers.^{22,23} Located on chromosome 6, the HLA region codes for cell-surface proteins that are instrumental in immune system surveillance and T-cell activation aimed at elimination of non-self antigens, including viral oncoproteins and neoantigens resulting from cancer proliferation.^{24–26} HLA Class I molecules (HLA-A, B, C) bind and export small endogenous peptides (8–10 amino acid residues) to the cell surface to signal cell destruction by CD8+ T lymphocytes; HLA Class II molecules (HLA-DPB1, DQB1, DRB1) bind and export larger endocytosed exogenous peptides (15–22 amino acid residues) to CD4+ T lymphocytes, initiating antibody production and adaptive immunity, and also inducing proliferation of CD8+ T lymphocytes through the release of IL-2.^{27,28}

HLA is the most highly polymorphic region of the human genome with nearly all of the variability located within the binding groove. HLA-antigen binding is a critical initial step in facilitating the immune response to viral oncoproteins and

neoantigens; thus, HLA composition determines the landscape of peptides that can be bound and, thus, eliminated. It is well-established that HLA variability is associated with variation in disease outcomes²⁹ including cancer susceptibility and treatment response, both at the individual⁷ and population levels.^{30,31} Using an immunogenetic epidemiological approach, we recently evaluated the overall influence of 127 HLA Class I and II alleles on the prevalence of 30 types of cancer and documented a preponderance of protective effects of HLA on cancers, although the effects of most alleles were mixed with regard to protection or susceptibility for specific cancers.³⁰ Subsequent analyses of HLA-cancer associations identified 3 distinct clusters suggesting shared genetic immunogenetic influences among cancers within a given cluster³¹; among them, breast and ovarian cancers clustered together, in keeping with prior evidence of immunogenetic overlap (associations) between breast and ovarian cancer,²³ as did uterine and cervical cancer. Here we extend that line of research by evaluating the immunogenetic profiles of breast, ovarian, cervical, and uterine cancers and their associations.

Materials and Methods

Prevalence of breast, cervical, ovarian, and uterine cancers

The population prevalence of these 4 cancers in 2016 was computed for each of the following 14 countries in Continental



Western Europe (CWE): Austria, Belgium, Denmark, Finland, France, Germany, Greece, Italy, Netherlands, Portugal, Norway, Spain, Sweden, and Switzerland. Specifically, the total number of people with each cancer in each of the 14 CWE countries was identified from the Global Health Data Exchange,³² a publicly available catalog of data from the Global Burden of Disease study, the most comprehensive worldwide epidemiological study of more than 350 diseases. The number of people with each cancer in each country was divided by the total population of each country in 2016³³ and expressed as a percentage. We have previously shown that life expectancy for these countries is virtually identical³⁴; therefore, life expectancy was not included in the current analyses.

HLA

The frequencies of all reported HLA alleles of classical genes of Class I (A, B, C) and Class II (DPB1, DQB1, DRB1) for each of the 14 CWE countries were retrieved from the website allelefrequencies.net (Estimation of Global Allele Frequencies)^{35,36} on October 20, 2020. As we reported previously,³⁴ there was a total of 2746 entries of alleles from the 14 CWE countries, comprising 844 distinct alleles, that is, alleles that occurred in at least one country. Of those, 127 alleles occurred in 9 or more countries and were used in further analyses. This criterion is somewhat arbitrary but reasonable; it was partially validated in a previous study.³⁷

Cancer-HLA profiles and Protection/Susceptibility (P/S) estimates

HLA profiles for each cancer were derived by computing, first, the Pearson correlation coefficient, r , between the prevalence of a cancer and the population frequency of an allele, and then its Fisher z -transform,³⁸ r' , to normalize its distribution:

HLA-Cancer Protection/Susceptibility (P/S) estimate:

$$r' = \operatorname{atanh}(r) = \frac{1}{2} \left(\ln \frac{1+r}{1-r} \right) \quad (1)$$

Negative P/S estimates indicate a protective association (“protective” alleles), whereas positive P/S estimates indicate a susceptibility association (“susceptibility” alleles). Thus 4 Cancer-HLA profiles were computed, each consisting of 127 values of r' . These data were tabulated in a 127 alleles (rows) \times 4 cancers (columns) matrix (“Allele-Cancer” matrix); its transpose was a 4 cancers \times 127 alleles matrix (“Cancer-Allele” matrix).

Factor analysis

A Factor Analysis (FA) was performed to identify potential groupings (“components”) of cancers (from the Allele-Cancer matrix). The method of principal components was used for extraction and the method of direct oblimin ($\delta=0$) with Kaiser normalization for factor rotation.

Hierarchical clustering

A hierarchical clustering analysis³⁹ was performed to identify potential immunogenetic cancer clusters in a dendrogram using average between-groups linkage as the method and squared Euclidean distance as the interval.

Testing of proportions

Comparison of proportions between 2 groups was performed using the Wald H_0 test.

Data analysis

Standard statistical methods were used to analyze the data, including repeated measures analysis of variance (ANOVA), Pearson correlations, linear regression, etc. Statistical analyses were performed using the IBM-SPSS package (IBM SPSS Statistics for Windows, Version 27.0, 64-bit edition. Armonk, NY: IBM Corp; 2020) and Intel FORTRAN (Microsoft Visual Studio Community 2019, Version 16.7.5; Intel FORTRAN Compiler 2021). More specifically, factor analysis and hierarchical clustering were performed using the IBM-SPSS statistical package above. All P -values reported as 2-sided.

Results

Immunogenetic profiles

Representative examples of associations between cancer prevalence and allele frequency are shown in Figures 1 and 2 for breast cancer (Figure 1, left panel), cervical cancer (Figure 1, right panel), ovarian cancer (Figure 2, left panel) and uterine cancer (Figure 2, right panel). The immunogenetic scores of the 4 cancers and 127 HLA alleles analyzed are given in the Appendix. Their frequency distributions are plotted in Figure 3, and descriptive statistics are shown in Table 1.

A repeated measures ANOVA with the P/S score of the 4 cancer types as the Within Subjects variables revealed a statistically significant effect for the Cancer factor (Greenhouse-Geisser test, $P=.019$). With respect to individual cancer types, there was an overall HLA protection effect for breast and ovarian cancers, and an overall susceptibility effect for cervical and uterine cancers (Figure 4). More specifically, the mean P/S scores did not differ significantly between breast versus ovarian cancer, and cervical versus uterine cancer; in contrast, the mean P/S scores of breast and ovarian cancers were significantly lower (ie, more protective) than either the cervical or uterine P/S scores (Table 2).

Immunogenetic associations between specific cancers

All the 6 pairwise immunogenetic scores of the 4 cancers are plotted in Figures 4 to 7; the corresponding Pearson correlations and associated statistics (confidence intervals and P values) are given in Table 3. It can be seen that all correlations

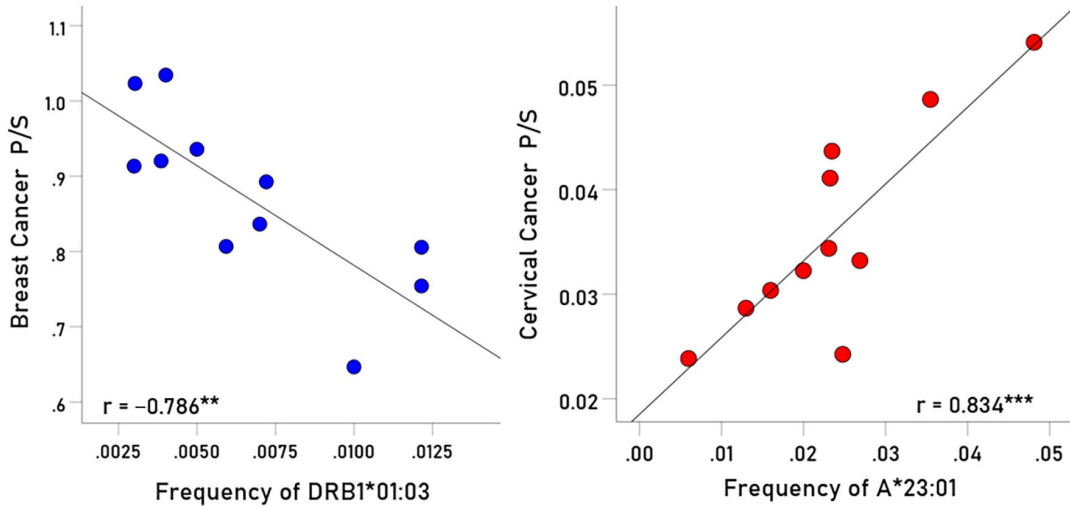


Figure 1. Left panel: Example of a protective allele for breast cancer. Prevalence of breast cancer is plotted against frequency of DRB1:01:03 for 11 CWE countries. $P = .004$; $r = -0.786$, $r' = -1.062$. Right panel: Example of a susceptibility allele for cervical cancer. Prevalence of cervical cancer is plotted against frequency of A*23:01 for 11 CWE countries. $P = .001$; $r = .834$, $r' = 1.202$.

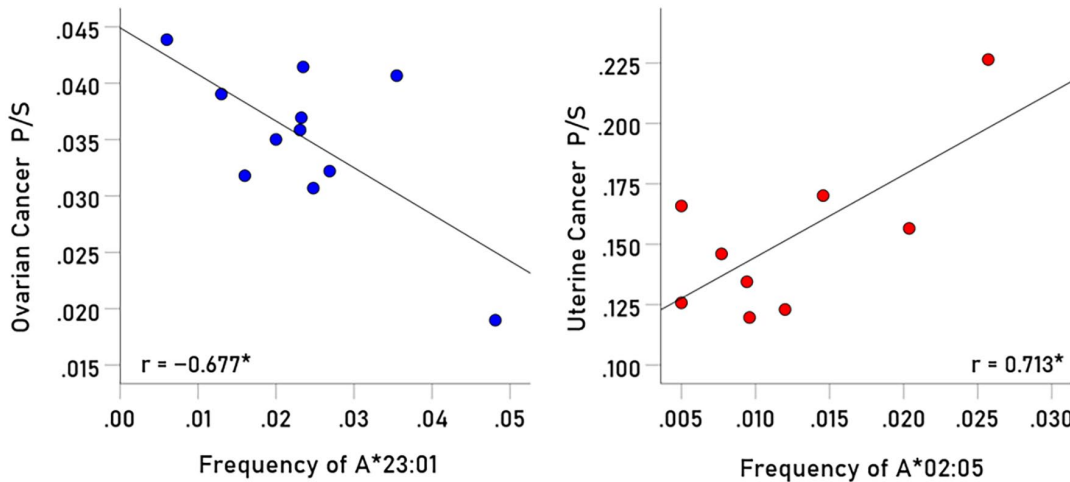


Figure 2. (Left panel) Example of a protective allele for ovarian cancer. Prevalence of ovarian cancer is plotted against frequency of A*23:01 for 11 CWE countries. $P = .022$; $r = -0.677$, $r' = -0.824$. (Right panel) Example of a susceptibility allele for uterine cancer. Prevalence of uterine cancer is plotted against frequency of A*02:05 for 9 CWE countries. $P = .031$; $r = 0.713$, $r' = 0.892$.

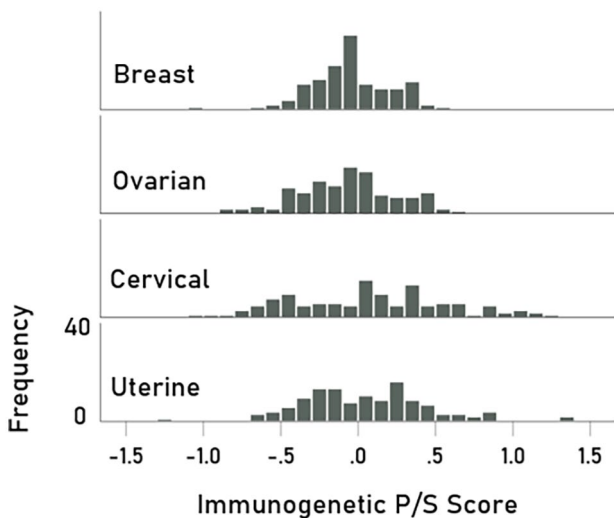


Figure 3. Frequency distributions of immunogenetic P/S scores of breast, cervical, ovarian, and uterine cancers. $N = 127$ for each distribution.

were statistically significant but with different signs and P -values. These results point to separate groupings of the 4 cancers, an idea that was explored further using factor analysis (FA) and hierarchical clustering.

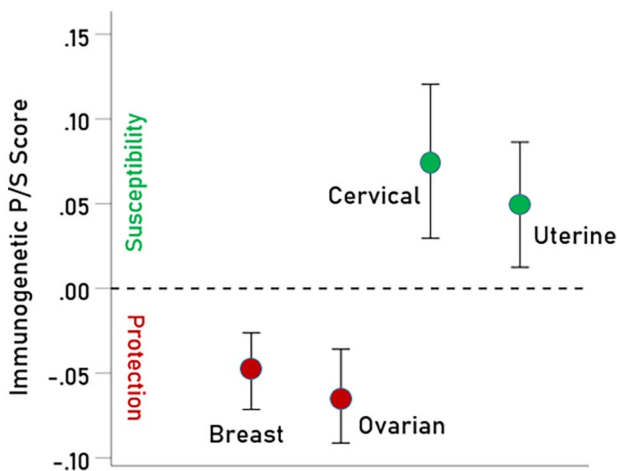
Factor analysis of cancer P/S scores

This FA yielded 2 components (with eigenvalue > 1) which explained (ie, accounted for) 82% of the variance (Table 4; Figure 8, scree plot). The correlation between the components was very low ($r = -0.104$). The specific assignment of the 4 cancer types to the 2 FA components was inferred from the FA structure matrix, which provides the correlations of between cancer type and FA component (Table 5). It can be seen that Cervical and Uterine cancers were primarily associated with Component 1, whereas Breast and Ovarian Cancers were primarily associated with Component 2. This is illustrated in the component plot of Figure 9, where it can be seen that Cervical and Uterine cancers project

Table 1. Descriptive statistics of P/S scores of the 4 cancers analyzed.

| | MEAN | SEM | SD | MEDIAN | MINIMUM | MAXIMUM |
|----------|---------|--------|--------|---------|---------|---------|
| Breast | -0.0488 | 0.0226 | 0.2545 | -0.0501 | -1.0619 | 0.5526 |
| Cervical | 0.0750 | 0.0454 | 0.5120 | 0.0851 | -1.0959 | 1.2023 |
| Ovarian | -0.0624 | 0.0277 | 0.3125 | -0.0421 | -0.8697 | 0.6143 |
| Uterine | 0.0494 | 0.0369 | 0.4164 | 0.0375 | -1.2956 | 1.3916 |

Abbreviations: SD, standard deviation; SEM, standard error of the mean.
N = 127 scores.

**Figure 4.** Mean \pm SEM of the 4 cancer P/S scores.**Table 2.** Pairwise comparisons of mean cancer P/S scores (from the repeated measures ANOVA).

| | MEAN DIFFERENCE | SE | P VALUE |
|--------------------|-----------------|-------|-----------|
| Breast – Cervical | -0.124 | 0.056 | .028* |
| Breast – Ovarian | 0.015 | 0.030 | .617 (NS) |
| Breast – Uterine | -0.098 | 0.037 | .009** |
| Cervical – Ovarian | 0.139 | 0.064 | .028* |
| Cervical – Uterine | 0.026 | 0.034 | .456 (NS) |
| Ovarian – Uterine | -0.113 | 0.050 | .026* |

Abbreviations: SE, standard error. *, statistically significant; **, highly statistically significant; NS, not statistically significant.

at high values on Component 1, whereas Breast and Ovarian cancers project highly on Component 2.

Hierarchical clustering of cancer P/S scores

Hierarchical clustering yielded 2 separate clusters (Figure 10), one comprising breast and ovarian cluster, and the other comprising cervical and uterine cancers. This result is in keeping with the outcome of the factor analysis above.

Overall protective and susceptibility alleles

The last column in Appendix gives the count of protective P/S cancer scores for each allele. There were 14/127 (11.0%) with a protective effect for all 4 cancers (sum = 4) and 9/127 (7.1%) with a susceptibility effect for all 4 cancers (sum = 0). The distribution of protective and susceptibility proportions between the 2 HLA Classes (I and II; Appendix) is shown in Tables 6 and 7, respectively. The proportions of overall protective alleles did not differ significantly between the 2 HLA classes (Table 6). In contrast, overall susceptibility alleles were only found in HLA Class II, a highly significant difference in the proportions of the 2 classes (Table 7).

Discussion

Here we evaluated the immunogenetic profiles of 4 women's cancers and their associations to investigate shared influences of HLA on the prevalences of breast, ovarian, cervical, and uterine cancers. The findings, which extend the results of a recent HLA-cancer clustering study,³¹ documented highly similar immunogenetic profiles for breast and ovarian cancers that were characterized by protective HLA effects as well as highly similar immunogenetic profiles for cervical and uterine cancers that were conversely characterized by susceptibility effects. The findings and their implications are discussed below.

Genetic associations between breast and ovarian cancers are well documented,^{23,40,41} with the BRCA1 and BRCA2 genes, in particular, having been implicated in both conditions.⁴²⁻⁴⁴ Here we document that genetic similarities between breast and ovarian cancers extend beyond BRCA to include genes involved with the immune response to non-self antigens. Comparatively, little research has evaluated genetic associations between cervical and endometrial cancers. A recent study documented both novel and common pathogenetic patterns of gene expression in cervical and endometrial cancers⁴⁵; still others have documented highly distinct gene networks associated with cervical and endometrial cancers.⁴⁶ With regard to their HLA profiles, our findings demonstrated cervical and uterine cancers were highly similar to each other yet differed from the breast and ovarian cancer profiles. Across the 4 cancer types roughly 18% of HLA alleles were found to confer either universal protection

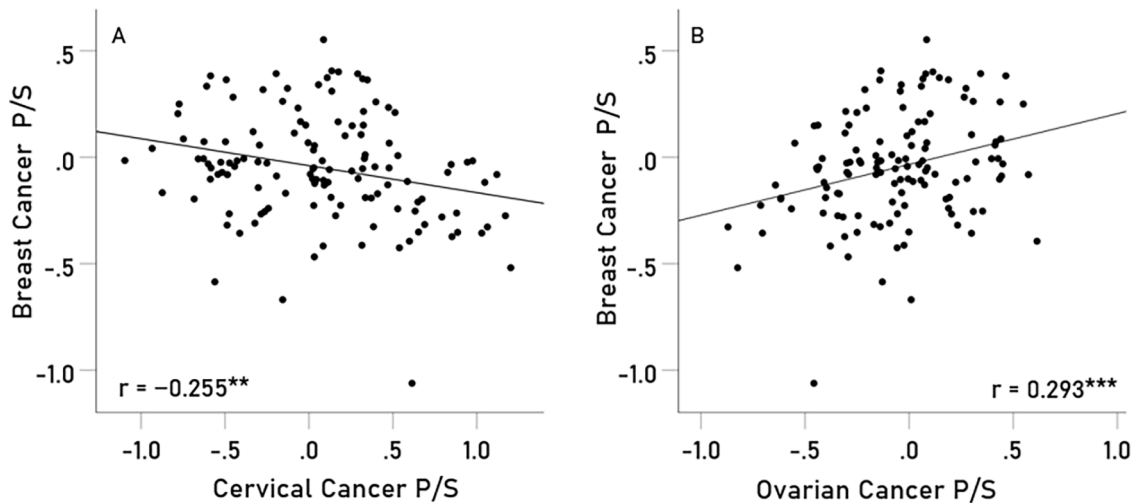


Figure 5. (A) breast cancer P/S scores are plotted against cervical cancer P/S scores ($P = .004$); (B) breast cancer P/S scores are plotted against ovarian cancer P/S scores ($P = .001$).

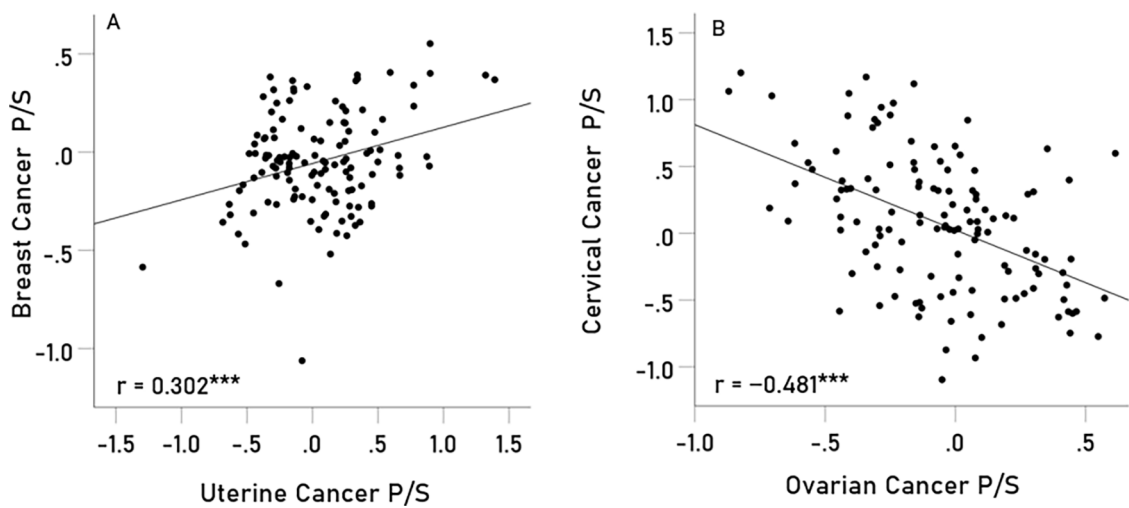


Figure 6. (A) breast cancer P/S scores are plotted against uterine cancer P/S scores ($P = .001$); (B) cervical cancer P/S scores are plotted against ovarian cancer P/S scores ($P < .001$).

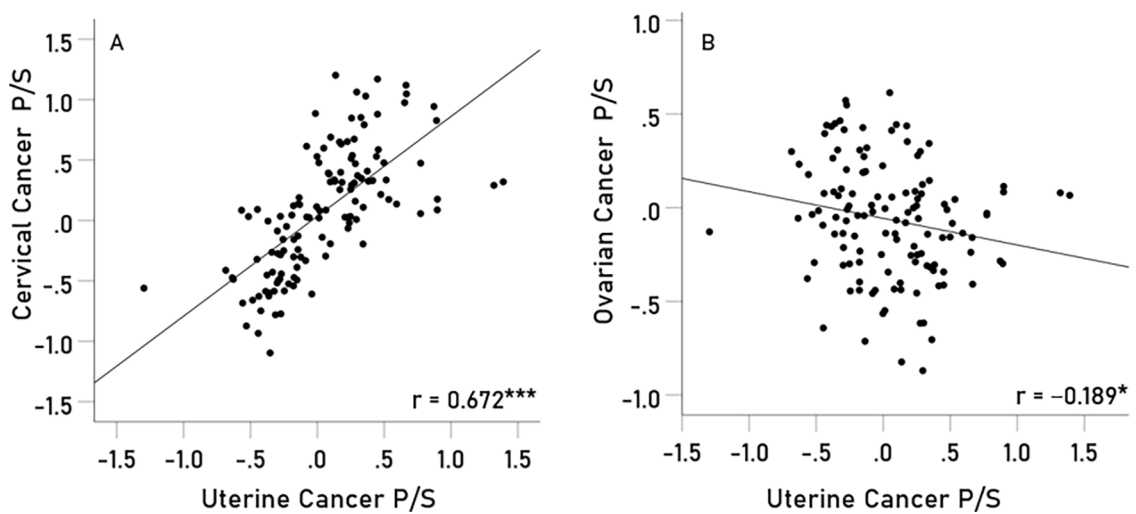


Figure 7. (A) cervical cancer P/S scores are plotted against uterine cancer P/S scores ($P < .001$); (B) ovarian cancer P/S scores are plotted against uterine cancer P/S scores ($P = .033$).

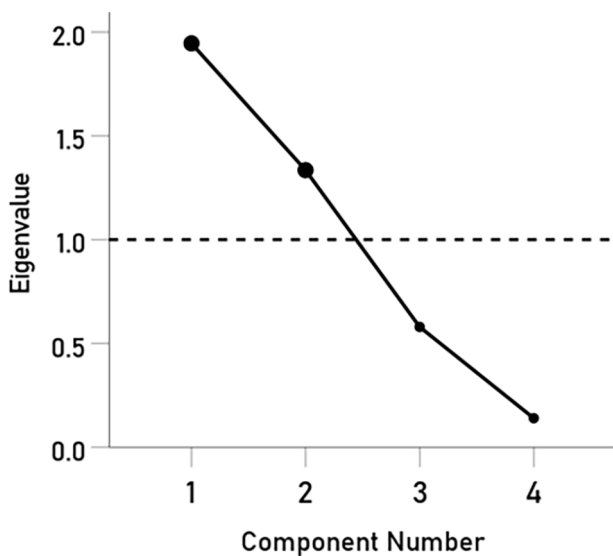
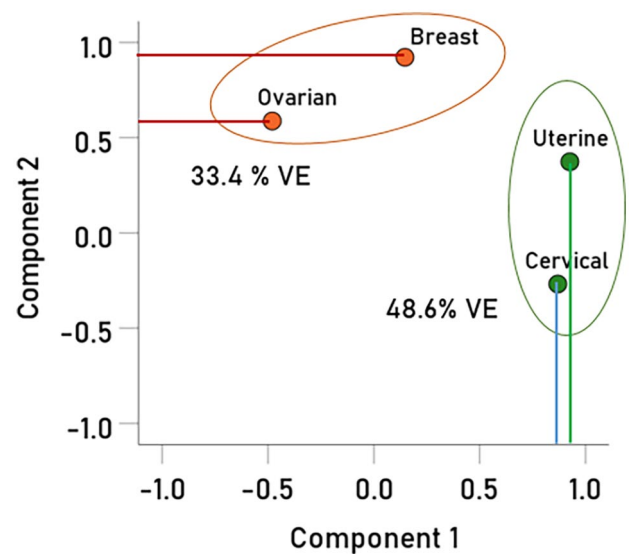
Table 3. Pearson correlations and associated statistics for the 6 pairwise associations of the P/S scores of the 4 cancer types.

| | CORRELATION | LOWER 95% CI | UPPER 95% CI | P VALUE (2-SIDED) |
|-------------------|-------------|--------------|--------------|-------------------|
| Breast, Cervical | -0.255 | -0.411 | -0.084 | .004** |
| Breast, Ovarian | 0.293 | 0.125 | 0.445 | .001*** |
| Breast, Uterine | 0.302 | 0.135 | 0.452 | .001*** |
| Cervical, Ovarian | -0.481 | -0.605 | -0.335 | <.001*** |
| Cervical, Uterine | 0.672 | 0.564 | 0.758 | <.001*** |
| Ovarian, Uterine | -0.189 | -0.352 | -0.016 | .033* |

Abbreviation: CI, confidence interval. *, statistically significant; **, highly statistically significant; ***, very highly statistically significant.

Table 4. Total variance explained by components (groupings) of cancer type.

| COMPONENT | EIGENVALUE | PERCENT OF VARIANCE EXPLAINED | CUMULATIVE PERCENT OF VARIANCE EXPLAINED |
|-----------|------------|-------------------------------|--|
| 1 | 1.95 | 48.64 | 48.64 |
| 2 | 1.34 | 33.37 | 82.01 |
| 3 | 0.58 | 14.49 | 96.50 |
| 4 | 0.14 | 3.50 | 100.00 |

**Figure 8.** Scree plot of factor analysis of the 4 cancer P/S scores.**Figure 9.** Component plot of factor analysis of the 4 cancer P/S scores. The first component (green cluster) comprised cervical and uterine cancers scores, and the second component (burnt orange cluster) comprises breast and ovarian scores.**Table 5.** Structure matrix of the 2-component FA for cancer types. Values are correlations of a cancer type with a FA component. The higher of the 2 cancer/component values are colored red.

| CANCER | COMPONENT | |
|----------|-----------|--------|
| | 1 | 2 |
| Breast | 0.051 | 0.907 |
| Cervical | 0.897 | -0.359 |
| Ovarian | -0.541 | 0.638 |
| Uterine | 0.887 | 0.277 |

or universal susceptibility for all 4 cancers with the remaining HLA alleles exerting mixed effects on cancer prevalences, indicating both shared and unique immunogenetic profiles for the 4 cancers.

Although this is the first study to evaluate the influence and overlap of a large number of HLA alleles on the prevalences of these 4 women's cancers, previous studies have implicated HLA in each of the cancers investigated here. For instance,

HLA has been linked to breast cancer protection versus susceptibility,¹¹ tumor progression and relapse,¹² response to chemotherapy¹⁴, and breast cancer survival.¹⁵ Cohort,¹⁰ meta-analytic,^{9,47} and genome-wide association studies²¹ have consistently shown that HLA is associated with cervical cancer risk and protection. Furthermore, downregulation of certain HLA alleles have been associated with worse survival outcomes for patients with cervical cancer.⁴⁸ Similarly, HLA is associated

with ovarian cancer risk¹⁷ and prognosis⁴⁹⁻⁵¹ and with uterine cancer prognosis^{52,53} and survival.¹⁸ Our study, which evaluated the influence of a large number of HLA alleles on the prevalences of breast, ovarian, cervical, and uterine cancers, adds to the body of literature implicating HLA in women's cancers and expands the knowledge base by documenting immunogenetic overlap between breast-ovarian and cervical-uterine cancers. Since HLA has been implicated in immunotherapy outcomes of other types of cancer,⁷ the present findings of shared versus unique HLA associations with each of the women's cancers could have broader implications regarding effectiveness of widely used immunotherapies of breast and gynecological cancers.^{54,55} Future studies evaluating the association of protective/susceptibility HLA alleles identified in this epidemiological study with immunotherapy effectiveness and survival in women with breast and gynecological cancers are warranted, akin to previous studies documenting the influence of certain HLA on immunotherapy for melanoma.⁷

Since foreign antigen elimination is the primary function of HLA, the present findings documenting highly similar HLA profiles for breast and ovarian cancers as well as cervical and uterine cancers suggest that each cancer pair may involve similar non-self antigens, such as neoantigens or viral oncoproteins. More than 20% of cancers are associated with a small number of infectious agents such as Epstein-Barr virus, human papillomaviruses, and Hepatitis B and C viruses.⁵⁶ Indeed, microbial infections have been implicated in breast cancer,⁵⁷⁻⁶⁰ ovarian cancer,^{61,62} cervical cancer,^{63,64} and uterine cancer^{65,66}

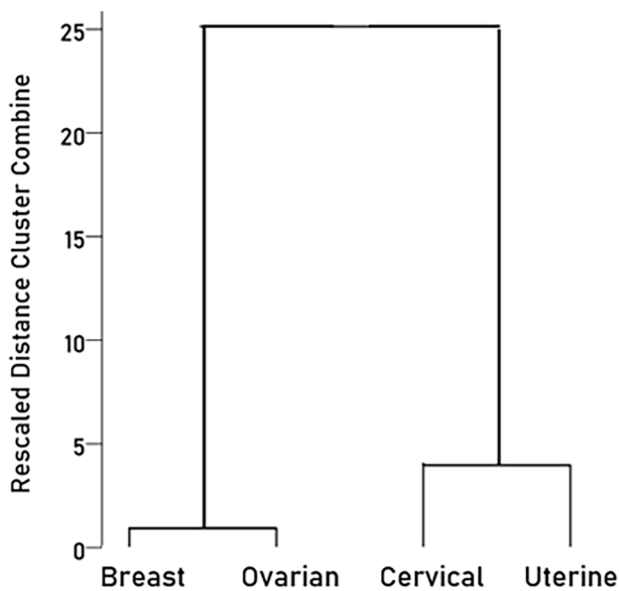


Figure 10. Dendrogram of hierarchical clustering of the 4 cancer P/S scores to show the 2 separate cancer clusters.

Table 6. Proportions of protective alleles and associated statistics of comparison between the 2 HLA Classes.

| HLA | N PROTECTIVE FOR ALL CANCERS | TOTAL N | PROPORTION PROTECTIVE | ASE |
|------------------|------------------------------|---------|-----------------------|---------|
| Class I | 5 | 69 | 0.072 | 0.031 |
| Class II | 9 | 58 | 0.155 | 0.048 |
| Comparison | | | | |
| | Difference of proportions | ASE | Z | P value |
| Class I–Class II | –0.083 | 0.057 | –1.1482 | .138 |

Table 7. Proportions of susceptibility alleles and associated statistics of comparison between the 2 HLA Classes.

| HLA | N SUSCEPTIBILITY FOR ALL CANCERS | TOTAL N | PROPORTION PROTECTIVE | ASE |
|------------------|----------------------------------|---------|-----------------------|---------|
| Class I | 0 | 69 | 0.000 | 0.000 |
| Class II | 9 | 58 | 0.155 | 0.048 |
| Comparison | | | | |
| | Difference of proportions | ASE | Z | P value |
| Class I–Class II | –0.155 | 0.048 | –3.395 | <.001 |

via 3 primary mechanisms including chronic inflammation resulting from persistent infection, direct virus-induced transformation of infected cells, and immunosuppression.⁶⁷ HLA is the most highly polymorphic region of the human genome; the interaction between host immunogenetics and microbial exposure is known to influence cancer proliferation as exemplified for cervical cancer.^{20,68,69}

The present study documents immunogenetic associations of a large number of HLA alleles with 4 cancers that commonly occur in women and demonstrates similarities and differences in their immunogenetic profiles. The immunogenetic epidemiological approach here permits evaluation of the influence of a larger number of alleles on the prevalence of these cancers; however, the novel findings are not without limitation. First, the present analyses focused on Continental Western Europe. Since both HLA^{70,71} and the global distribution of cancers^{3,72} vary geographically, the immunogenetic profiles observed here may not generalize to other populations. Second, although we evaluated the influence of a large number of high-resolution HLA alleles on the prevalences of women's cancers, analyses were limited to those alleles occurring in at least 9 of the 14 countries and, consequently, many HLA-cancer associations remain unknown. Finally, in light of the role of HLA in foreign antigen elimination, the findings point to the presence of similar non-self antigens among cancers that cluster together—that is, breast-ovarian and cervical-uterine—though the present analyses do not elucidate specific antigens that may be associated with a given cluster. Additional studies are warranted to identify antigens that may be associated with cancer clusters.

Author Contributions

LMJ extracted cancer prevalences and populations data. APG extracted allele frequencies and performed data analysis. LMJ and APG wrote and reviewed the paper.

Ethical Approval

This article does not contain any studies with human participants performed by any of the authors.

Data Availability

All data used were retrieved from freely accessible websites, as mentioned in Methods, and, as such, are publicly and freely available. Specifically:

1. Global Burden of Disease Collaborative Network. Global Burden of Disease Study 2016 (GBD 2016) Results. Seattle, United States: Institute for Health Metrics and Evaluation (IHME), 2020. Available from <http://ghdx.healthdata.org/gbd-results-tool> (2016). Data retrieved July 5, 2021.
2. Population Reference Bureau. 2016 world population data sheet with a special focus on human needs and sustainable

resources. Population Reference Bureau, Washington, DC, 2016. <https://www.prb.org/2016-world-population-data-sheet/> (2016). Accessed February 5, 2019.

3. Gonzalez-Galarza, F. F., Christmas, S., Middleton, D., & Jones, A. R. Allele frequency net: a database and online repository for immune gene frequencies in worldwide populations. *Nucleic Acid Res.* **39**, D913–D919. <https://doi.org/doi:10.1093/nar/gkq1128> (2011).
4. Allele*Frequencies in Worldwide Populations. Allele frequency net database (AFND) 2020 update. Liverpool, UK. Available from: <http://allelefrequencies.net/hla6006a.asp> (2020).

REFERENCES

1. Torre LA, Islami F, Siegel RL, Ward EM, Jemal A. Global cancer in women: Burden and trends. *Cancer Epidemiol Biomarkers Prev.* 2017;26:444–457.
2. Daly AA, Rolph R, Cutress RI, Copson ER. A review of modifiable risk factors in young women for the prevention of breast cancer. *Breast Cancer.* 2021; 13:241–257.
3. Felix AS, Brinton LA. Cancer progress and priorities: uterine cancer. *Cancer Epidemiol Biomarkers Prev.* 2018;27:985–994.
4. Sun M, Lemaçon A, Legault MA, et al. Genetic meta-analysis of cancer diagnosis following statin use identifies new associations and implicates human leukocyte antigen (HLA) in women. *Pharmacogenomics J.* 2021;21:446–457.
5. Seliger B, Stoehr R, Handke D, et al. Association of HLA class I antigen abnormalities with disease progression and early recurrence in prostate cancer. *Cancer Immunol Immunother.* 2010;59:529–540.
6. Sabbatino F, Liguori L, Polcaro G, et al. Role of human leukocyte antigen system as a predictive biomarker for checkpoint-based immunotherapy in cancer patients. *Int J Mol Sci.* 2020;21:7295.
7. Chowell D, Morris LG, Grigg CM, et al. Patient HLA class I genotype influences cancer response to checkpoint blockade immunotherapy. *Science.* 2017; 359:582–587.
8. Schaafsma E, Fugle CM, Wang X, Cheng C. Pan-cancer association of HLA gene expression with cancer prognosis and immunotherapy efficacy. *Br J Cancer.* 2021;125:422–432.
9. Kamiza AB, Kamiza S, Mathew CG. HLA-DRB1 alleles and cervical cancer: a meta-analysis of 36 case-control studies. *Cancer Epidemiol.* 2020;67:101748.
10. Madeleine MM, Johnson LG, Smith AG, et al. Comprehensive analysis of HLA-A, HLA-B, HLA-C, HLA-DRB1, and HLA-DQB1 loci and squamous cell cervical cancer risk. *Cancer Res.* 2008;68:3532–3539.
11. Chaudhuri S, Cariappa A, Tang M, et al. Genetic susceptibility to breast cancer: HLA DQB*03032 and HLA DRB1*11 may represent protective alleles. *Proc Natl Acad Sci USA.* 2000;97:11451–11454.
12. Kaneko K, Ishigami S, Kijima Y, et al. Clinical implication of HLA class I expression in breast cancer. *BMC Cancer.* 2011;11:454.
13. Saraiva DP, Jacinto A, Borralho P, Braga S, Cabral MG. HLA-DR in cytotoxic T lymphocytes predicts breast cancer patients' response to neoadjuvant chemotherapy. *Front. Immunol.* 2018;13:2605.
14. de Kruijf EM, van Nes JGH, Sajet A, et al. The predictive value of HLA class I tumor cell expression and presence of intratumoral Tregs for chemotherapy in patients with early breast cancer. *Clin Cancer Res.* 2010;16:1272–1280.
15. Ren Y, Cherukuri Y, Wickland DP, et al. HLA class-I and class-II restricted neoantigen loads predict overall survival in breast cancer. *OncoImmunology.* 2020;9:1744947.
16. Nishida S, Morimoto S, Oji Y, et al. Cellular and humoral immune responses induced by an HLA class I-restricted peptide cancer vaccine targeting WT1 are associated with favorable clinical outcomes in advanced ovarian cancer. *J Immunother.* 2022;45:56–66.
17. Kübler K, Arndt PF, Wardelmann E, Krebs D, Kuhn W, van der Ven K. HLA-class II haplotype associations with ovarian cancer. *Int J Cancer.* 2006; 119:2980–2985.
18. Clark KR, Tong WL, Callahan BM, Yavorski JM, Tu YN, Blanck G. TRB-J1 usage, in combination with the HLA-A*01:01 allele, represents an apparent survival advantage for uterine corpus endometrial carcinoma: comparisons with

- microscopic assessments of lymphocyte infiltrates. *Int J Immunogenet.* 2019;46:31-37.
19. Liang J, Xu A, Xie Y, Awonuga AO, Lin Z. Some but not all of HLA-II alleles are associated with cervical cancer in Chinese women. *Cancer Genet Cytogenet.* 2008;187:95-100.
 20. Cuzick J, Terry G, Ho L, et al. Association between high-risk HPV types, HLA drb1* and dqb1* alleles and cervical cancer in British women. *Br J Cancer.* 2000;82:1348-1352.
 21. Ramachandran D, Dörk T. Genomic risk factors for cervical cancer. *Cancers.* 2021;13:5137.
 22. Rashkin SR, Graff RE, Kachuri L, et al. Pan-cancer study detects genetic risk variants and shared genetic basis in two large cohorts. *Nat Commun.* 2020;11:4423.
 23. Jiang X, et al. Shared heritability and functional enrichment across six solid cancers. *Nat Commun.* 2019;10:431.
 24. Moore PS, Chang Y. Why do viruses cause cancer? Highlights of the first century of human tumour virology. *Nat Rev Cancer.* 2010;10:878-889.
 25. Morales-Sánchez A, Fuentes-Pananá EM. Human viruses and cancer. *Viruses.* 2014;6:4047-4079.
 26. Zhang Z, Lu M, Qin Y, et al. Neoantigen: a new breakthrough in tumor immunotherapy. *Front Immunol.* 2021;12:672356.
 27. Wang C, Xiong C, Hsu Y, Wang C, Chen X, L. Human leukocyte antigen (HLA) and cancer immunotherapy: HLA-dependent and-independent adoptive immunotherapies. *Ann. Blood.* 2020;5:3058-3070.
 28. Haabeth OA, Tveita AA, Fauskanger M, et al. How do CD4+ T cells detect and eliminate tumor cells that either lack or express MHC class II molecules? *Front Immunol.* 2014;5:174.
 29. Dendrou CA, Petersen J, Rossjohn J, Fugger L. HLA variation and disease. *Nat Rev Immunol.* 2018;18:325-339.
 30. Georgopoulos AP, James LM. Immunogenetic association of 127 human leukocyte antigen (HLA) alleles with 30 cancers in continental Western European countries. *J Immunological Sci.* 2022;6:6-17.
 31. James LM, Georgopoulos AP. Immunogenetic clustering of 30 cancers. *Sci Rep.* 2022;12:7235.
 32. Global Burden of Disease Collaborative Network. Global Burden of Disease Study 2016 (GBD 2016) Results. Seattle, United States: Institute for Health Metrics and Evaluation (IHME), 2020. 2016. Accessed 5 July 2016. <http://ghdx.healthdata.org/gbd-results-tool>
 33. Population Reference Bureau. 2016 world population data sheet with a special focus on human needs and sustainable resources. Population Reference Bureau, Washington, DC, 2016. Accessed 5 February 2019. <https://www.prb.org/2016-world-population-data-sheet/>
 34. James LM, Georgopoulos AP. The human leukocyte antigen (HLA) DRB1*13:02 allele protects against dementia in continental Western Europe. *J. Neurol Neurosurg.* 2019;4:1-6.
 35. Gonzalez-Galarza FF, Christmas S, Middleton D, Jones AR. Allele frequency net: a database and online repository for immune gene frequencies in worldwide populations. *Nucleic Acids Res.* 2010;39:D913-D919.
 36. Allele*Frequencies in Worldwide Populations. Allele frequency net database (AFND) 2020 update. Liverpool, UK. 2020. <http://allelefrequencies.net/hla6006a.asp>. Accessed on October 20, 2020.
 37. James LM, Georgopoulos AP. Immunogenetic epidemiology of dementia and Parkinson's disease in 14 continental European countries: shared human leukocyte antigen (HLA) profiles. *J Immunol Sci.* 2021;5:16-26.
 38. Fisher RA. *Statistical Methods for Research Workers.* 13th ed. Oliver and Boyd; 1958.
 39. Corter JE. *Tree Models of Similarity and Association.* Vol. 7. SAGE; 1996.
 40. Schildkraut JM, Risch N, Thompson WD. Evaluating genetic association among ovarian, breast, and endometrial cancer: evidence for a breast/ovarian cancer relationship. *Am J Hum Genet.* 1989;45:521-529.
 41. Suszynska M, Klonowska K, Jasinska AJ, Kozłowski P. Large-scale meta-analysis of mutations identified in panels of breast/ovarian cancer-related genes - providing evidence of cancer predisposition genes. *Gynecol Oncol.* 2019;153:452-462.
 42. Miki Y, Swensen J, Shattuck-Eidens D, et al. A strong candidate for the breast and ovarian cancer susceptibility gene *BRCA1*. *Science.* 1994;266:66-71.
 43. Kuchenbaecker KB. Risks of breast, ovarian, and contralateral breast cancer for *BRCA1* and *BRCA2* mutation carriers. *JAMA.* 2017;317:2402-2416.
 44. Mavaddat N, Peock S, Frost D, et al. Cancer risks for *BRCA1* and *BRCA2* mutation carriers: results from prospective analysis of EMBRACE. *J Natl Cancer Inst.* 2013;105:812-822.
 45. Pappa KI, Polyzos A, Jacob-Hirsch J, et al. Profiling of discrete gynecological cancers reveals novel transcriptional modules and common features shared by other cancer types and embryonic stem cells. *PLoS One.* 2015;10:e0142229.
 46. Cook CJ, Miller AE, Barker TH, Di Y, Fogg KC. Characterizing the extracellular matrix transcriptome of cervical, endometrial, and uterine cancers. *Matrix Biol Plus.* 2022;15:100117.
 47. Zhang X, Zhang L, Tian C, Yang L, Wang Z. Genetic variants and risk of cervical cancer: epidemiological evidence, meta-analysis and research review. *BJOG.* 2014;121:664-674.
 48. Mehta AM, Jordanova ES, Kenter GG, Ferrone S, Fleuren GJ. Association of antigen processing machinery and HLA class I defects with clinicopathological outcome in cervical carcinoma. *Cancer Immunol Immunother.* 2007;57:197-206.
 49. Andersson E, Villabona L, Bergfeldt K, et al. Correlation of HLA-a02* genotype and HLA class I antigen down-regulation with the prognosis of epithelial ovarian cancer. *Cancer Immunol Immunother.* 2012;61:1243-1253.
 50. Gamzatova Z, Villabona L, van der Zanden H, et al. Analysis of HLA class I-II haplotype frequency and segregation in a cohort of patients with advanced stage ovarian cancer. *Tissue Antigens.* 2007;70:205-213.
 51. Gamzatova Z, Villabona L, Dahlgren L, et al. Human leukocyte antigen (HLA) A2 as a negative clinical prognostic factor in patients with advanced ovarian cancer. *Gynecol Oncol.* 2006;103:145-150.
 52. Hirohashi Y, Torigoe T, Mariya T, Kochin V, Saito T, Sato N. HLA class I as a predictor of clinical prognosis and CTL infiltration as a predictor of chemosensitivity in ovarian cancer. *Oncol Immunology.* 2015;4:e1005507.
 53. Bijen CB, Bantema-Joppe EJ, de Jong RA, et al. The prognostic role of classical and nonclassical MHC class I expression in endometrial cancer. *Int J Cancer.* 2010;126:1417-1427.
 54. Barroso-Sousa R, Keenan TE, Pernas S, et al. Tumor mutational burden and PTEN alterations as molecular correlates of response to PD-1/L1 blockade in metastatic triple-negative breast cancer. *Clin Cancer Res.* 2020;26:2565-2572.
 55. Rubinstein MM, Makker V. Optimizing immunotherapy for gynecologic cancers. *Curr Opin Obstet Gynecol.* 2020;32:1-8.
 56. Zur Hausen H. The search for infectious causes of human cancers: where and why. *Virology.* 2009;392:1-10.
 57. Amarante MK, Watanabe MAE. The possible involvement of virus in breast cancer. *J Cancer Res Clin Oncol.* 2009;135:329-337.
 58. Glenn WK, Heng B, Delprado W, Iacopetta B, Whitaker NJ, Lawson JS. Epstein-Barr virus, human papillomavirus and mouse mammary tumour virus as multiple viruses in breast cancer. *PLoS One.* 2012;7:e48788.
 59. Heng B, Glenn WK, Ye Y, et al. Human papilloma virus is associated with breast cancer. *Br J Cancer.* 2009;101:1345-1350.
 60. Richardson AK, Walker LC, Cox B, et al. Breast cancer and cytomegalovirus. *Clin Transl Oncol.* 2020;22:585-602.
 61. Pathak S, Wilczyński JR, Paradowska E. Factors in oncogenesis: viral infections in ovarian cancer. *Cancers.* 2020;12:561.
 62. Xie X, Yang M, Ding Y, Chen J. Microbial infection, inflammation and epithelial ovarian cancer. *Oncol Lett.* 2017;14:1911-1919.
 63. Cohen PA, Jhingran A, Oaknin A, Denny L. Cervical cancer. *Lancet.* 2019;393:169-182.
 64. de Lima MAP, Neto PJN, Lima LPM, et al. Association between Epstein-Barr virus (EBV) and cervical carcinoma: A meta-analysis. *Gynecol Oncol.* 2018;148:317-328.
 65. Lin Y, Wang W, Wan J, et al. Oncolytic activity of a coxsackievirus B3 strain in human endometrial cancer cell lines. *Virology.* 2018;15:65.
 66. Crooks TA, Madison JD, Walsh DM, et al. Porphyromonas somerae invasion of endometrial cancer cells. *Front Microbiol.* 2021;12:674835.
 67. Dalton-Griffin L, Kellam P. Infectious causes of cancer and their detection. *J Biol.* 2009;8:67.
 68. de Araujo Souza PS, Sicheo L, Maciag PC. HPV variants and HLA polymorphisms: the role of variability on the risk of cervical cancer. *Future Oncol.* 2009;5:359-370.
 69. Beskow AH, Josefsson AM, Gyllensten UB. HLA class II alleles associated with infection by HPV16 in cervical cancer in situ. *Int J Cancer.* 2001;93:817-822.
 70. Garamszegi LZ. Global distribution of malaria-resistant MHC-HLA alleles: the number and frequencies of alleles and malaria risk. *Malar J.* 2014;13:349.
 71. Singh R, Kaul R, Kaul A, Khan K. A comparative review of HLA associations with hepatitis B and C viral infections across global populations. *World J Gastroenterol.* 2007;13:1770-1787.
 72. Arbyn M, Weiderpass E, Bruni L, et al. Estimates of incidence and mortality of cervical cancer in 2018: a worldwide analysis. *Lancet Glob Health.* 2020;8:e191-e203.

Appendix. Immunogenetic scores r' of 4 cancers. The column Frequency Protective gives the count of protective alleles (P/S score <0). Allele rows with Sum=4 (protective for all 4 cancers) are colored **blue**, whereas rows with Sum=0 (susceptibility for all 4 cancers) are colored **red**.

| INDEX | ALLELE | CLASS | BREAST | CERVICAL | OVARIAN | UTERINE | FREQUENCY PROTECTIVE |
|-----------|----------------|----------|----------------|----------------|----------------|----------------|----------------------|
| 1 | A*01:01 | I | 0.0682 | -0.0045 | 0.0849 | -0.3682 | 2 |
| 2 | A*02:01 | I | 0.0863 | -0.7472 | 0.4408 | -0.4215 | 2 |
| 3 | A*02:05 | I | -0.0707 | 0.8271 | -0.2982 | 0.8924 | 2 |
| 4 | A*03:01 | I | 0.0415 | -0.9332 | 0.0767 | -0.4410 | 2 |
| 5 | A*11:01 | I | -0.0339 | 0.8475 | 0.0475 | 0.2571 | 1 |
| 6 | A*23:01 | I | -0.5190 | 1.2023 | -0.8233 | 0.1376 | 2 |
| 7 | A*24:02 | I | -0.1690 | -0.1386 | -0.3434 | 0.0374 | 3 |
| 8 | A*25:01 | I | -0.1882 | 0.1319 | 0.1941 | -0.1310 | 2 |
| 9 | A*26:01 | I | -0.3261 | 0.3851 | -0.1387 | 0.0894 | 2 |
| 10 | A*29:01 | I | -0.0427 | -0.4420 | -0.0085 | -0.2683 | 4 |
| 11 | A*29:02 | I | -0.2099 | 0.6495 | -0.0800 | 0.1673 | 2 |
| 12 | A*30:01 | I | -0.0796 | 0.0086 | 0.1244 | 0.2932 | 1 |
| 13 | A*30:02 | I | -0.1136 | 0.5868 | 0.0186 | 0.4571 | 1 |
| 14 | A*31:01 | I | -0.0152 | -1.0959 | -0.0510 | -0.3522 | 4 |
| 15 | A*32:01 | I | -0.0536 | 0.3201 | -0.0661 | 0.0981 | 2 |
| 16 | A*33:01 | I | -0.1179 | 1.0478 | -0.4084 | 0.6673 | 2 |
| 17 | A*33:03 | I | -0.0577 | 0.1224 | -0.4402 | -0.1773 | 3 |
| 18 | A*36:01 | I | -0.1961 | 0.6736 | -0.6164 | 0.2767 | 2 |
| 19 | A*68:01 | I | 0.3177 | -0.2731 | -0.2125 | -0.2957 | 3 |
| 20 | A*68:02 | I | -0.6692 | -0.1559 | 0.0099 | -0.2551 | 3 |
| 21 | B*07:02 | I | -0.0074 | -0.6587 | -0.0161 | -0.4824 | 4 |
| 22 | B*08:01 | I | 0.2826 | -0.4515 | 0.2647 | -0.3752 | 2 |
| 23 | B*13:02 | I | -0.2549 | -0.2630 | 0.3088 | -0.3392 | 3 |
| 24 | B*14:01 | I | -0.2620 | 0.8800 | -0.4127 | 0.4512 | 2 |
| 25 | B*14:02 | I | -0.0230 | 0.9440 | -0.2843 | 0.8730 | 2 |
| 26 | B*15:01 | I | 0.0733 | -0.6248 | -0.1402 | -0.3615 | 3 |
| 27 | B*15:17 | I | 0.3409 | 0.0572 | -0.0377 | 0.7730 | 1 |
| 28 | B*15:18 | I | 0.1512 | -0.0188 | -0.2889 | 0.2404 | 2 |
| 29 | B*18:01 | I | -0.1000 | 0.2933 | 0.2787 | 0.2575 | 1 |
| 30 | B*27:02 | I | -0.0065 | -0.3878 | 0.4280 | -0.1509 | 3 |
| 31 | B*27:05 | I | -0.0711 | -0.5166 | -0.1370 | -0.2997 | 4 |
| 32 | B*35:01 | I | 0.3931 | -0.1948 | 0.3434 | 0.3429 | 1 |
| 33 | B*35:02 | I | -0.2745 | 0.1594 | -0.2444 | 0.2845 | 2 |
| 34 | B*35:03 | I | -0.0644 | 0.2555 | 0.0793 | 0.1697 | 1 |
| 35 | B*35:08 | I | 0.1012 | 0.2156 | -0.0103 | 0.4761 | 1 |

(Continued)

Appendix. (Continued)

| INDEX | ALLELE | CLASS | BREAST | CERVICAL | OVARIAN | UTERINE | FREQUENCY PROTECTIVE |
|-----------|----------------|----------|----------------|----------------|----------------|----------------|----------------------|
| 36 | B*37:01 | I | 0.3337 | -0.6087 | 0.0589 | -0.0404 | 2 |
| 37 | B*38:01 | I | -0.2746 | 1.1706 | -0.3424 | 0.4513 | 2 |
| 38 | B*39:01 | I | 0.1481 | 0.2578 | -0.4555 | 0.2504 | 1 |
| 39 | B*39:06 | I | 0.1202 | -0.3322 | 0.0137 | -0.0864 | 2 |
| 40 | B*40:01 | I | 0.2049 | -0.7800 | 0.1013 | -0.3123 | 2 |
| 41 | B*40:02 | I | -0.1428 | -0.3013 | -0.3963 | -0.1759 | 4 |
| 42 | B*41:01 | I | -0.0880 | -0.1925 | 0.4442 | 0.0984 | 2 |
| 43 | B*41:02 | I | -0.2421 | 0.5291 | -0.5649 | -0.0014 | 3 |
| 44 | B*44:02 | I | -0.4169 | 0.0851 | -0.3782 | -0.5653 | 3 |
| 45 | B*44:03 | I | -0.3159 | 0.6897 | -0.1690 | 0.1009 | 2 |
| 46 | B*44:05 | I | 0.1509 | 0.3244 | -0.4377 | 0.1326 | 1 |
| 47 | B*45:01 | I | -0.0447 | 0.3932 | -0.4343 | 0.0827 | 2 |
| 48 | B*47:01 | I | -0.2259 | 0.1892 | -0.7129 | -0.1351 | 3 |
| 49 | B*49:01 | I | -0.0810 | 1.1198 | -0.1589 | 0.6643 | 2 |
| 50 | B*50:01 | I | -0.3562 | 1.0296 | -0.7044 | 0.3630 | 2 |
| 51 | B*51:01 | I | 0.0119 | 0.3352 | -0.0829 | 0.5160 | 1 |
| 52 | B*52:01 | I | -0.2397 | -0.2411 | 0.1896 | -0.1432 | 3 |
| 53 | B*55:01 | I | 0.3238 | -0.1276 | 0.2732 | -0.1435 | 2 |
| 54 | B*56:01 | I | -0.0067 | -0.6273 | 0.3963 | -0.4359 | 3 |
| 55 | B*57:01 | I | -0.1046 | 0.0449 | -0.0411 | -0.1895 | 3 |
| 56 | B*58:01 | I | 0.0338 | 0.0275 | -0.2544 | 0.2081 | 1 |
| 57 | C*01:02 | I | -0.0817 | -0.4852 | 0.5731 | -0.2797 | 3 |
| 58 | C*03:03 | I | 0.2503 | -0.7727 | 0.5486 | -0.2720 | 2 |
| 59 | C*04:01 | I | -0.1714 | 0.4089 | -0.3353 | 0.3750 | 2 |
| 60 | C*05:01 | I | -0.2268 | 0.0289 | -0.0214 | -0.0781 | 3 |
| 61 | C*06:02 | I | 0.0664 | 0.4785 | -0.5491 | 0.0124 | 1 |
| 62 | C*07:01 | I | 0.3642 | -0.4920 | 0.1891 | -0.1513 | 2 |
| 63 | C*07:02 | I | 0.3829 | -0.5855 | 0.4647 | -0.3218 | 2 |
| 64 | C*07:04 | I | -0.1306 | 0.0916 | -0.6418 | -0.4463 | 3 |
| 65 | C*12:02 | I | -0.0491 | 0.0293 | 0.0875 | 0.2385 | 1 |
| 66 | C*12:03 | I | -0.0499 | 0.4776 | -0.1563 | 0.4993 | 2 |
| 67 | C*14:02 | I | -0.0058 | 0.3308 | -0.4169 | 0.4151 | 2 |
| 68 | C*15:02 | I | -0.1914 | 0.3715 | -0.6150 | 0.3020 | 2 |
| 69 | C*16:01 | I | -0.4252 | 0.5390 | -0.0574 | 0.2627 | 2 |
| 70 | DPB1*01:01 | I | -0.1029 | -0.5867 | 0.4343 | -0.3853 | 3 |
| 71 | DPB1*02:01 | II | 0.2341 | 0.4746 | -0.0294 | 0.7737 | 1 |

(Continued)

Appendix. (Continued)

| INDEX | ALLELE | CLASS | BREAST | CERVICAL | OVARIAN | UTERINE | FREQUENCY PROTECTIVE |
|------------|-------------------|-----------|----------------|----------------|----------------|----------------|----------------------|
| 72 | DPB1*02:02 | II | -0.2530 | 0.6329 | 0.3532 | 0.1798 | 1 |
| 73 | DPB1*03:01 | II | 0.5526 | 0.0875 | 0.0842 | 0.8981 | 0 |
| 74 | DPB1*04:01 | II | -0.5854 | -0.5598 | -0.1285 | -1.2956 | 4 |
| 75 | DPB1*04:02 | II | -0.2655 | -0.4742 | -0.0561 | -0.6344 | 4 |
| 76 | DPB1*05:01 | II | 0.0730 | -0.4967 | 0.4166 | -0.2908 | 2 |
| 77 | DPB1*06:01 | II | -0.0538 | 0.0241 | -0.4405 | -0.0594 | 3 |
| 78 | DPB1*09:01 | II | 0.3688 | 0.3202 | 0.0665 | 1.3916 | 0 |
| 79 | DPB1*10:01 | II | 0.3635 | 0.3483 | -0.1412 | 0.3317 | 1 |
| 80 | DPB1*11:01 | II | -0.3943 | 0.5992 | 0.6143 | 0.0492 | 1 |
| 81 | DPB1*13:01 | II | 0.3106 | 0.1364 | -0.0421 | -0.1421 | 2 |
| 82 | DPB1*14:01 | II | -0.1016 | 0.0219 | -0.0042 | 0.0135 | 2 |
| 83 | DPB1*17:01 | II | 0.3741 | 0.1094 | 0.1457 | 0.3446 | 0 |
| 84 | DPB1*19:01 | II | 0.2628 | -0.1562 | 0.3078 | -0.1743 | 2 |
| 85 | DQB1*02:01 | II | -0.1174 | 0.1140 | 0.2243 | -0.0036 | 2 |
| 86 | DQB1*02:02 | II | -0.4133 | 0.3157 | -0.0243 | 0.1855 | 2 |
| 87 | DQB1*03:01 | II | 0.2102 | 0.5132 | -0.2508 | 0.2546 | 1 |
| 88 | DQB1*03:02 | II | 0.0573 | -0.2945 | 0.4129 | 0.0631 | 1 |
| 89 | DQB1*03:03 | II | -0.0501 | -0.5829 | -0.4446 | -0.2452 | 4 |
| 90 | DQB1*04:02 | II | -0.0803 | -0.5412 | -0.2906 | -0.1771 | 4 |
| 91 | DQB1*05:01 | II | -0.0272 | -0.2499 | -0.2995 | -0.2506 | 4 |
| 92 | DQB1*05:02 | II | 0.1063 | 0.3110 | 0.3001 | 0.2773 | 0 |
| 93 | DQB1*05:03 | II | 0.2600 | 0.3990 | 0.4371 | 0.1758 | 0 |
| 94 | DQB1*06:01 | II | 0.1675 | -0.0495 | 0.0747 | -0.2295 | 2 |
| 95 | DQB1*06:02 | II | -0.1960 | -0.6831 | 0.1775 | -0.5573 | 3 |
| 96 | DQB1*06:03 | II | -0.4678 | 0.0327 | -0.2927 | -0.5135 | 3 |
| 97 | DQB1*06:04 | II | -0.3097 | -0.3214 | -0.0931 | -0.4498 | 4 |
| 98 | DQB1*06:09 | II | 0.2155 | 0.3254 | -0.3044 | 0.3827 | 1 |
| 99 | DRB1*01:01 | II | -0.0309 | -0.5995 | 0.4502 | -0.3583 | 3 |
| 100 | DRB1*01:02 | II | -0.3273 | 1.0634 | -0.8697 | 0.2957 | 2 |
| 101 | DRB1*01:03 | II | -1.0619 | 0.6142 | -0.4573 | -0.0791 | 3 |
| 102 | DRB1*03:01 | II | 0.4013 | 0.1765 | 0.1143 | 0.8990 | 0 |
| 103 | DRB1*04:01 | II | -0.3189 | -0.4868 | 0.2328 | -0.6270 | 3 |
| 104 | DRB1*04:02 | II | -0.0168 | 0.9755 | -0.2380 | 0.6540 | 2 |
| 105 | DRB1*04:03 | II | -0.1294 | 0.4701 | 0.0743 | 0.2855 | 1 |
| 106 | DRB1*04:04 | II | -0.0165 | -0.4275 | 0.0645 | -0.3340 | 3 |
| 107 | DRB1*04:05 | II | 0.3922 | 0.2910 | 0.0796 | 1.3215 | 0 |

(Continued)

Appendix. (Continued)

| INDEX | ALLELE | CLASS | BREAST | CERVICAL | OVARIAN | UTERINE | FREQUENCY PROTECTIVE |
|------------|-------------------|-----------|----------------|----------------|----------------|----------------|----------------------|
| 108 | DRB1*04:07 | II | -0.3512 | 0.6529 | -0.0009 | 0.2255 | 2 |
| 109 | DRB1*04:08 | II | -0.1663 | -0.8727 | -0.0357 | -0.5296 | 4 |
| 110 | DRB1*07:01 | II | -0.3527 | 0.8858 | -0.2497 | -0.0131 | 3 |
| 111 | DRB1*08:01 | II | -0.0234 | -0.5244 | -0.1513 | -0.2127 | 4 |
| 112 | DRB1*08:03 | II | 0.1138 | -0.0867 | -0.3072 | -0.2980 | 3 |
| 113 | DRB1*09:01 | II | -0.0267 | -0.4721 | -0.2319 | -0.1731 | 4 |
| 114 | DRB1*10:01 | II | 0.2315 | -0.0646 | -0.2056 | 0.2304 | 2 |
| 115 | DRB1*11:01 | II | 0.4058 | 0.1362 | -0.1356 | 0.5938 | 1 |
| 116 | DRB1*11:02 | II | -0.2805 | 0.7924 | -0.3173 | 0.3513 | 2 |
| 117 | DRB1*11:03 | II | 0.0078 | 0.5301 | -0.1595 | 0.4432 | 1 |
| 118 | DRB1*11:04 | II | 0.1667 | 0.1742 | 0.0447 | 0.5355 | 0 |
| 119 | DRB1*12:01 | II | -0.0215 | -0.3028 | 0.3201 | -0.1222 | 3 |
| 120 | DRB1*13:01 | II | -0.1226 | 0.0345 | -0.0697 | -0.2751 | 3 |
| 121 | DRB1*13:02 | II | -0.2663 | -0.2843 | 0.2035 | -0.2740 | 3 |
| 122 | DRB1*13:03 | II | -0.3729 | 0.8524 | -0.3095 | 0.3273 | 2 |
| 123 | DRB1*13:05 | II | -0.1895 | 0.3362 | -0.4014 | 0.1279 | 2 |
| 124 | DRB1*14:01 | II | -0.0164 | 0.0800 | -0.1359 | 0.0189 | 2 |
| 125 | DRB1*15:01 | II | -0.3570 | -0.4118 | 0.2998 | -0.6837 | 3 |
| 126 | DRB1*15:02 | II | -0.1083 | 0.0867 | 0.0570 | 0.0654 | 1 |
| 127 | DRB1*16:01 | II | 0.0550 | 0.0332 | 0.0114 | 0.2489 | 0 |